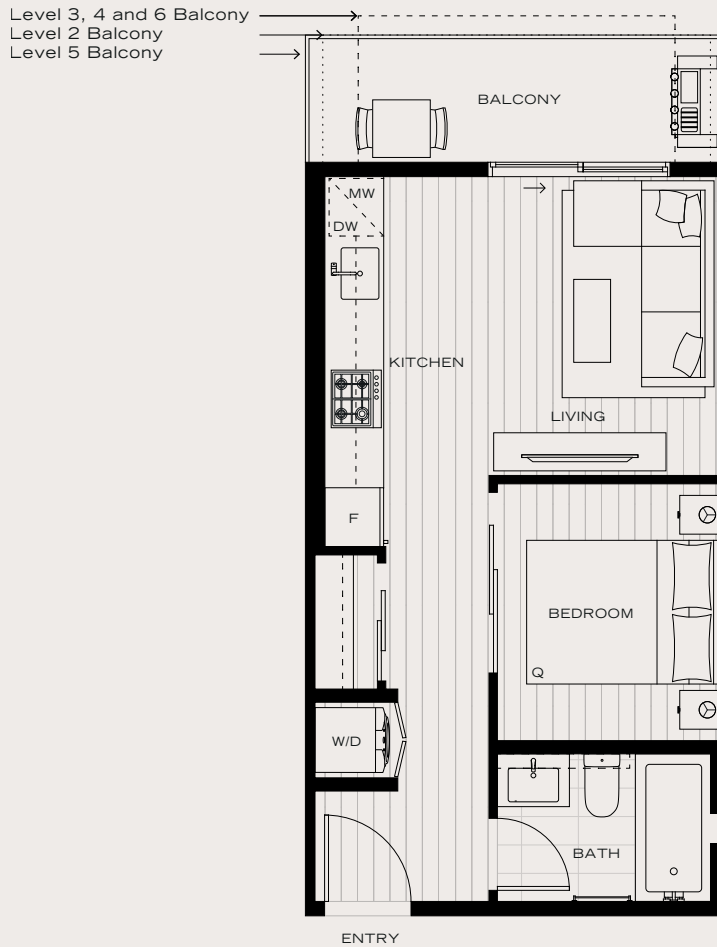
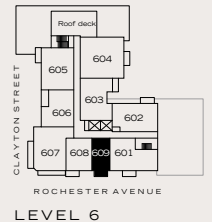
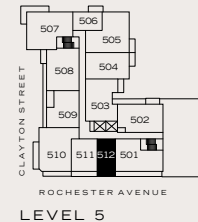
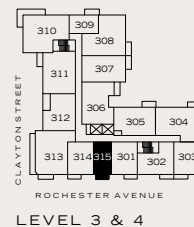
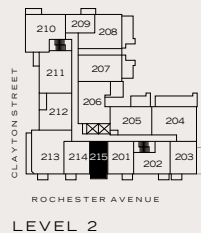


## STUDIO, 1 BATHROOM

INTERIOR: 384 SF  
 EXTERIOR: 51-62 SF  
 TOTAL: 435-446 SF



The developer reserves the right to modify or make substitutes to the building design, specifications and floorplans should they be necessary. Renderings, views, and layouts are for illustration purposes only. Sales powered by MLA Canada Realty. E.&O.E.



# A2

# LODANA

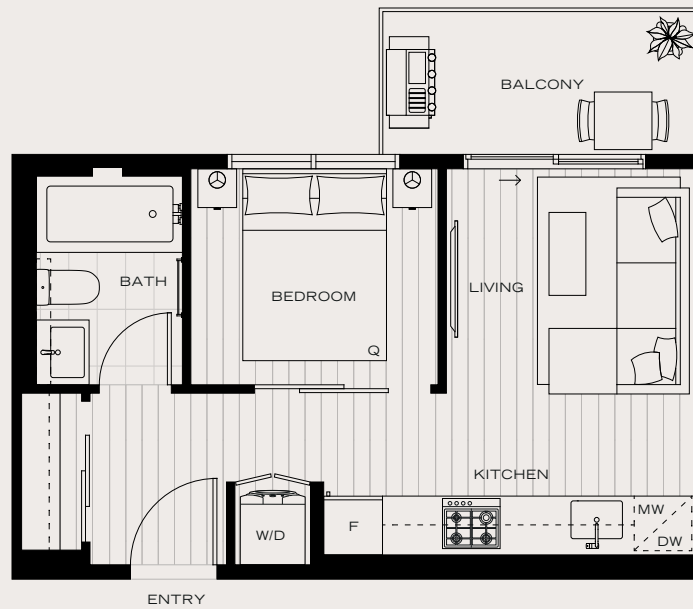
*A return to family* IN WEST COQUITLAM

## JR 1 BEDROOM, 1 BATHROOM

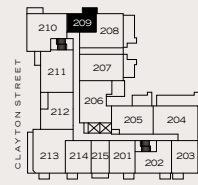
INTERIOR: 352 SF

EXTERIOR: 56 SF

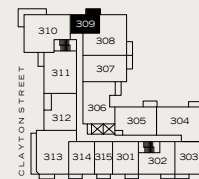
TOTAL: 408 SF



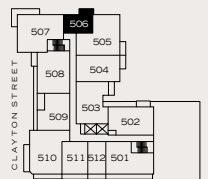
The developer reserves the right to modify or make substitutes to the building design, specifications and floorplans should they be necessary. Renderings, views, and layouts are for illustration purposes only. Sales powered by MLA Canada Realty. E.&O.E.



LEVEL 2



LEVEL 3 & 4



LEVEL 5

# B1

# LODANA

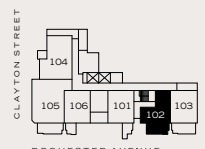
*A return to family* IN WEST COQUITLAM

## 1 BEDROOM, 1 BATHROOM

INTERIOR: 488 SF  
EXTERIOR: 167 SF  
TOTAL: 655 SF



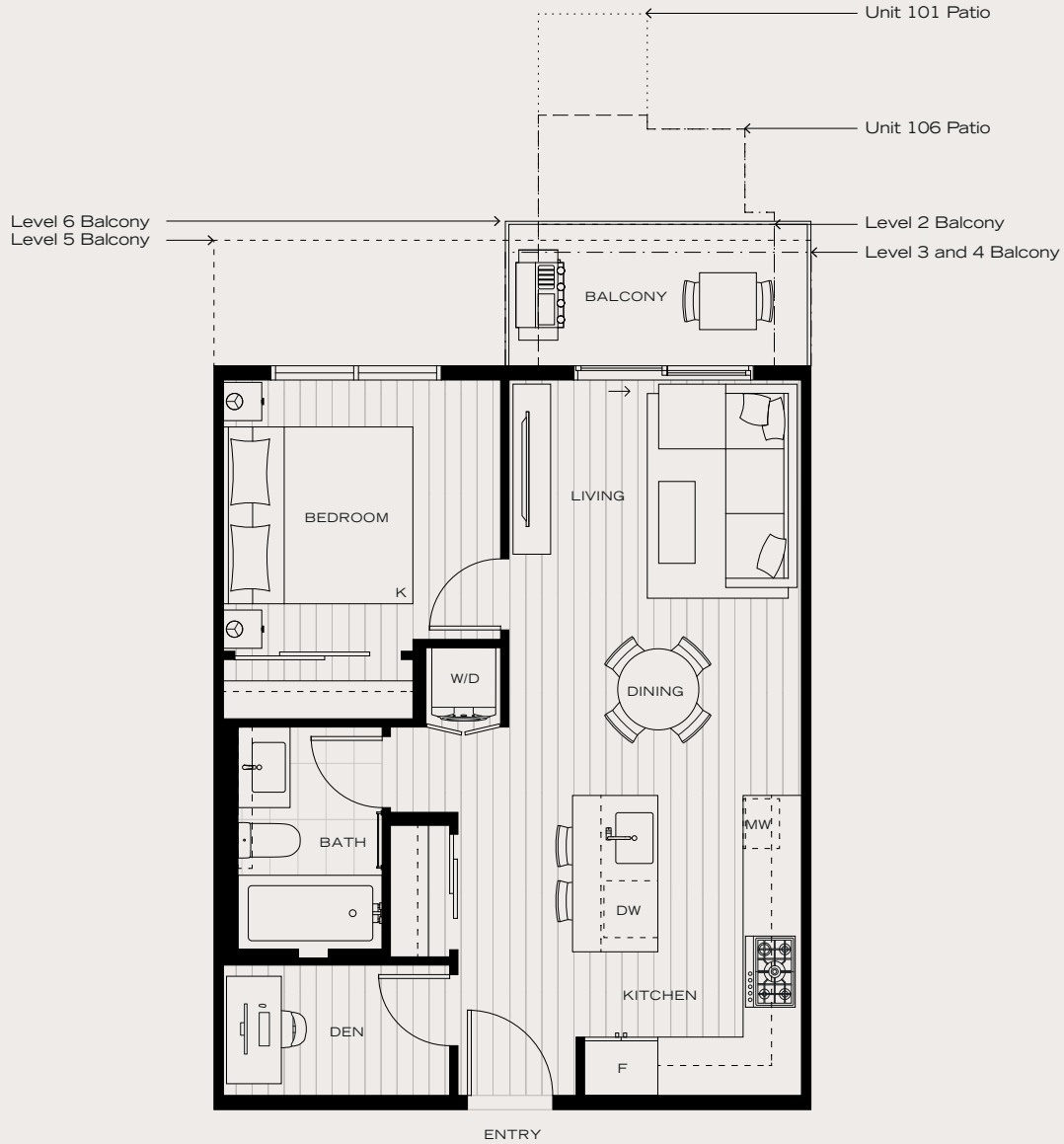
The developer reserves the right to modify or make substitutes to the building design, specifications and floorplans should they be necessary. Renderings, views, and layouts are for illustration purposes only. Sales powered by MLA Canada Realty. E.&O.E.



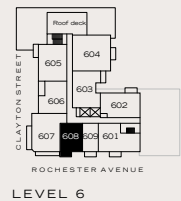
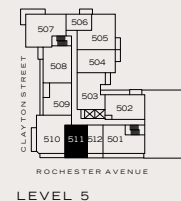
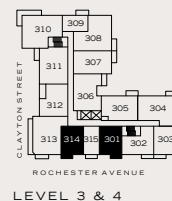
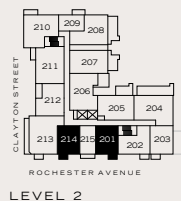
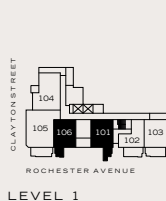
LEVEL 1

## 1 BEDROOM + DEN, 1 BATHROOM

INTERIOR: 550 SF  
 EXTERIOR: 39-102 SF  
 TOTAL: 589-652 SF

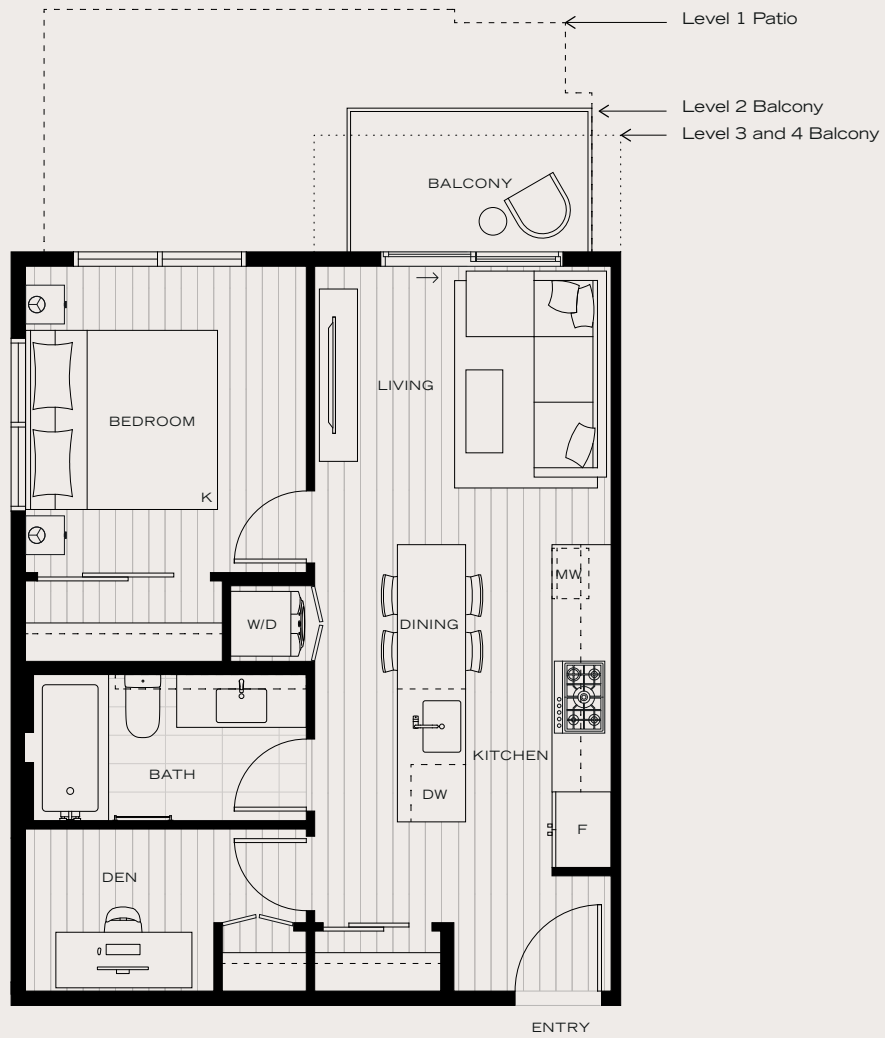


The developer reserves the right to modify or make substitutes to the building design, specifications and floorplans should they be necessary. Renderings, views, and layouts are for illustration purposes only. Sales powered by MLA Canada Realty. E.&O.E.

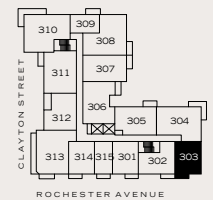
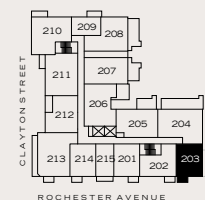
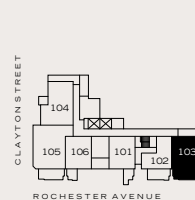


## 1 BEDROOM + DEN, 1 BATHROOM

INTERIOR: 551 SF  
 EXTERIOR: 41-161 SF  
 TOTAL: 593-713 SF



The developer reserves the right to modify or make substitutes to the building design, specifications and floorplans should they be necessary. Renderings, views, and layouts are for illustration purposes only. Sales powered by MLA Canada Realty. E.&O.E.



# C3

# LODANA

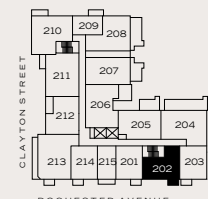
*A return to family* IN WEST COQUITLAM

## 1 BEDROOM + DEN, 1 BATHROOM

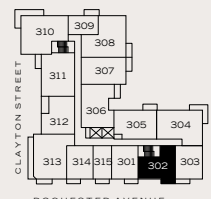
INTERIOR: 631 SF  
EXTERIOR: 41-51 SF  
TOTAL: 672-682 SF



The developer reserves the right to modify or make substitutes to the building design, specifications and floorplans should they be necessary. Renderings, views, and layouts are for illustration purposes only. Sales powered by MLA Canada Realty. E.&O.E.



LEVEL 2



LEVEL 3 & 4

# D1

# LODANA

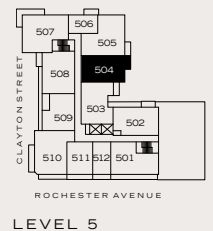
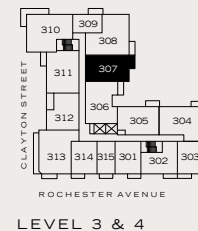
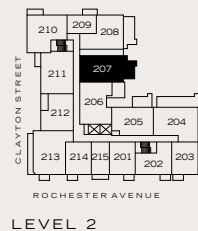
*A return to family* IN WEST COQUITLAM

## JR 2 BEDROOM + DEN, 1 BATHROOM

INTERIOR: 741 SF  
EXTERIOR: 53-162 SF  
TOTAL: 794-903 SF



The developer reserves the right to modify or make substitutes to the building design, specifications and floorplans should they be necessary. Renderings, views, and layouts are for illustration purposes only. Sales powered by MLA Canada Realty. E.&O.E.



# E1

# LODANA

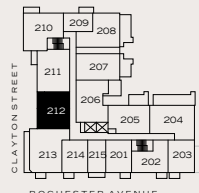
*A return to family* IN WEST COQUITLAM

## 2 BEDROOM, 2 BATHROOM

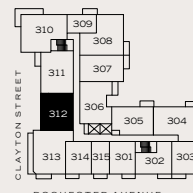
INTERIOR: 724 SF  
EXTERIOR: 88-89 SF  
TOTAL: 812-813 SF



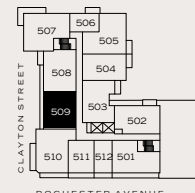
The developer reserves the right to modify or make substitutes to the building design, specifications and floorplans should they be necessary. Renderings, views, and layouts are for illustration purposes only. Sales powered by MLA Canada Realty. E.&O.E.



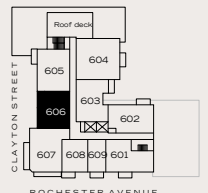
LEVEL 2



LEVEL 3 & 4



LEVEL 5



LEVEL 6



# F1

# LODANA

*A return to family* IN WEST COQUITLAM

## 2 BEDROOM + DEN, 2 BATHROOM

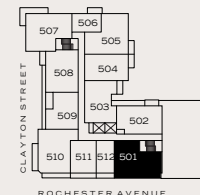
INTERIOR: 863 SF

EXTERIOR: 51-159 SF

TOTAL: 914-1,022 SF



The developer reserves the right to modify or make substitutes to the building design, specifications and floorplans should they be necessary. Renderings, views, and layouts are for illustration purposes only. Sales powered by MLA Canada Realty. E.&O.E.



LEVEL 5



LEVEL 6

## 2 BEDROOM + DEN, 2 BATHROOM

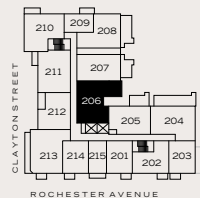
INTERIOR: 860 SF

EXTERIOR: 54-158 SF

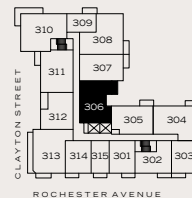
TOTAL: 914-1,018 SF



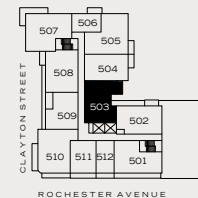
The developer reserves the right to modify or make substitutes to the building design, specifications and floorplans should they be necessary. Renderings, views, and layouts are for illustration purposes only. Sales powered by MLA Canada Realty. E.&O.E.



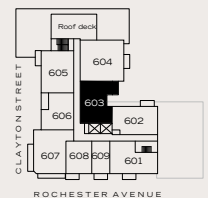
LEVEL 2



LEVEL 3 & 4



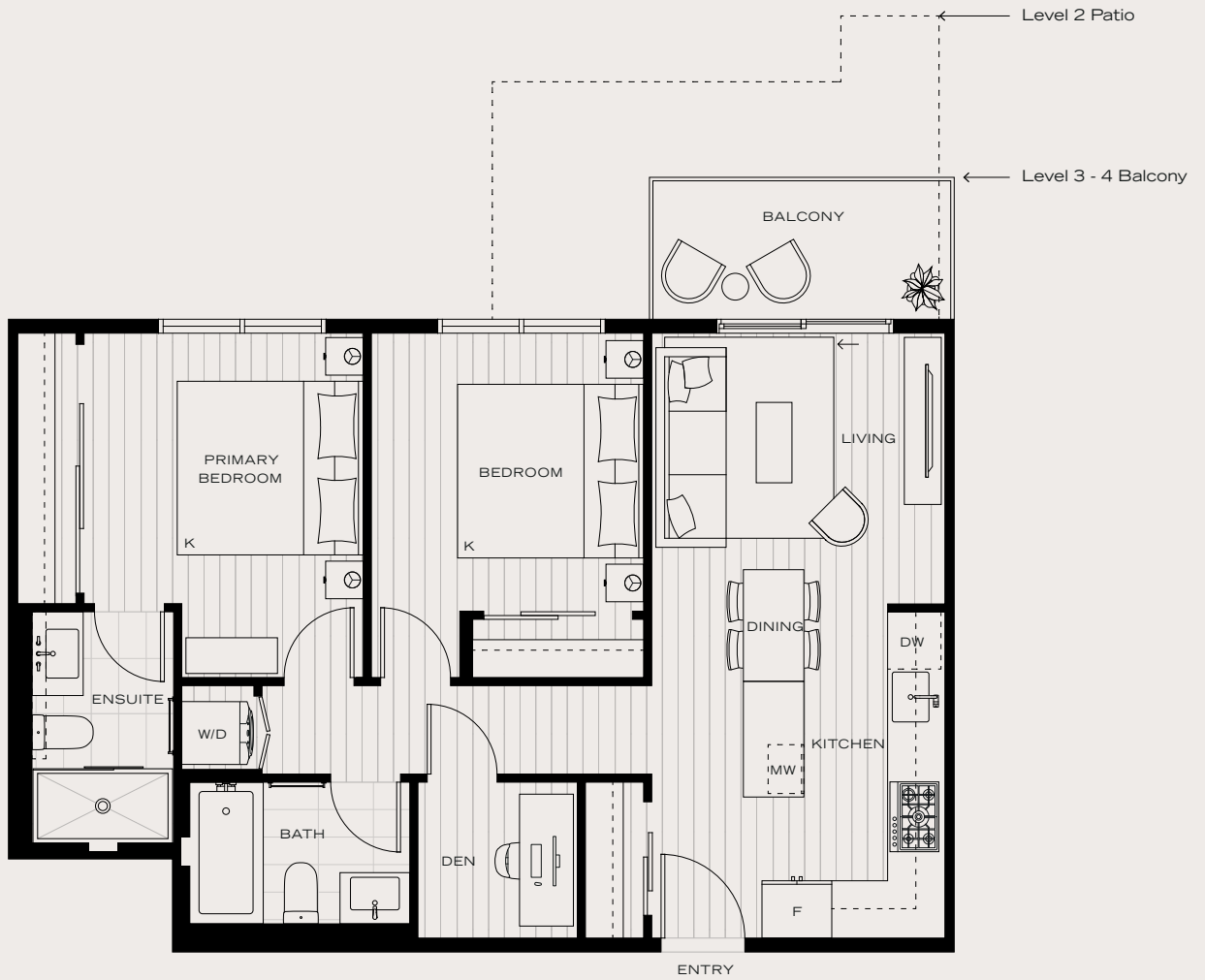
LEVEL 5



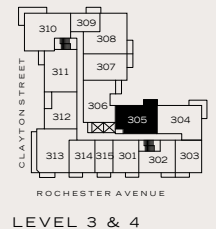
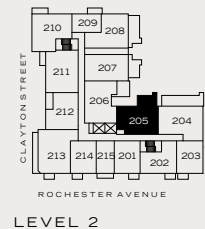
LEVEL 6

## 2 BEDROOM + DEN, 2 BATHROOM

INTERIOR: 748 SF  
 EXTERIOR: 53-144 SF  
 TOTAL: 801-892 SF



The developer reserves the right to modify or make substitutes to the building design, specifications and floorplans should they be necessary. Renderings, views, and layouts are for illustration purposes only. Sales powered by MLA Canada Realty. E.&O.E.



# F4

# LODANA

*A return to family* IN WEST COQUITLAM

**2 BEDROOM + DEN, 2 BATHROOM**

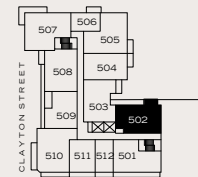
INTERIOR: 812 SF

EXTERIOR: 53 SF

TOTAL: 865 SF



The developer reserves the right to modify or make substitutes to the building design, specifications and floorplans should they be necessary. Renderings, views, and layouts are for illustration purposes only. Sales powered by MLA Canada Realty. E.&O.E.



LEVEL 5



LEVEL 6

# F5

# LODANA

*A return to family* IN WEST COQUITLAM

## 2 BEDROOM + DEN, 2 BATHROOM

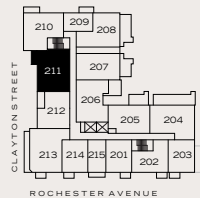
INTERIOR: 899 SF

EXTERIOR: 55-58 SF

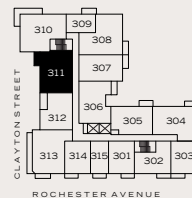
TOTAL: 954-957 SF



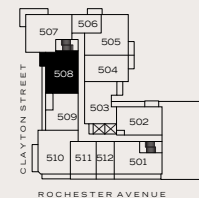
The developer reserves the right to modify or make substitutes to the building design, specifications and floorplans should they be necessary. Renderings, views, and layouts are for illustration purposes only. Sales powered by MLA Canada Realty. E.&O.E.



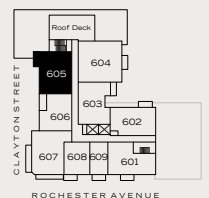
LEVEL 2



LEVEL 3 & 4



LEVEL 5



LEVEL 6

# F6

# LODANA

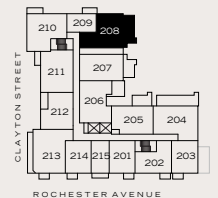
*A return to family* IN WEST COQUITLAM

## 2 BEDROOM + DEN, 2 BATHROOM

INTERIOR: 772 SF  
EXTERIOR: 242 SF  
TOTAL: 1,014 SF



The developer reserves the right to modify or make substitutes to the building design, specifications and floorplans should they be necessary. Renderings, views, and layouts are for illustration purposes only. Sales powered by MLA Canada Realty. E.&O.E.



LEVEL 2

# F7

# LODANA

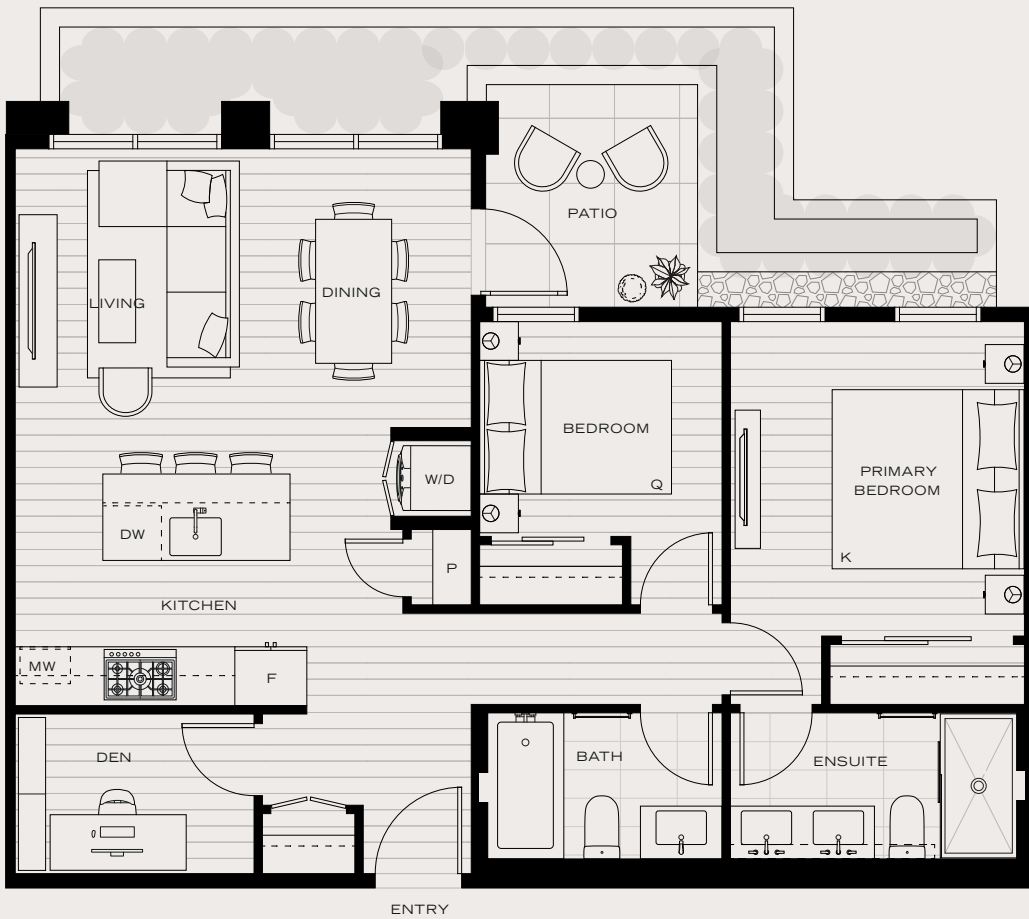
*A return to family* IN WEST COQUITLAM

## 2 BEDROOM + DEN, 2 BATHROOM

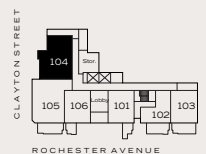
INTERIOR: 823 SF

EXTERIOR: 58 SF

TOTAL: 881 SF



The developer reserves the right to modify or make substitutes to the building design, specifications and floorplans should they be necessary. Renderings, views, and layouts are for illustration purposes only. Sales powered by MLA Canada Realty. E.&O.E.



LEVEL 1

# G1

# LODANA

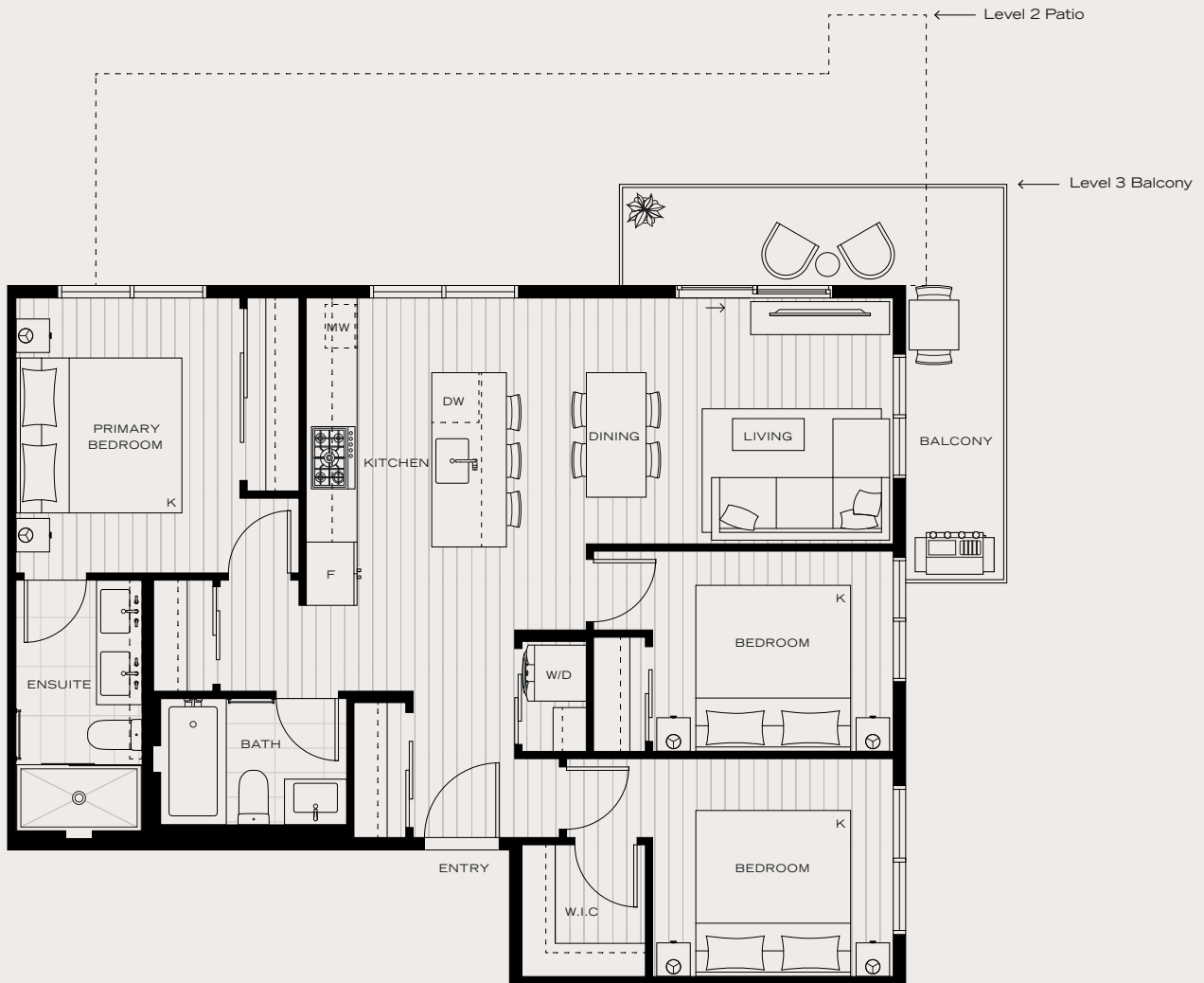
*A return to family* IN WEST COQUITLAM

## 3 BEDROOM, 2 BATHROOM

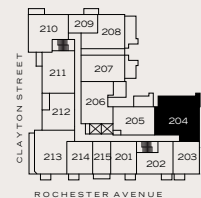
INTERIOR: 904 SF

EXTERIOR: 108-297 SF

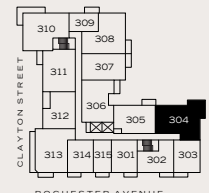
TOTAL: 1,012-1,201 SF



The developer reserves the right to modify or make substitutes to the building design, specifications and floorplans should they be necessary. Renderings, views, and layouts are for illustration purposes only. Sales powered by MLA Canada Realty. E.&O.E.



LEVEL 2



LEVEL 3 & 4

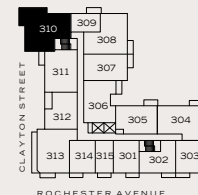


### 3 BEDROOM, 2 BATHROOM

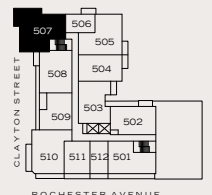
INTERIOR: 997 SF  
 EXTERIOR: 154 SF  
 TOTAL: 1,151 SF



The developer reserves the right to modify or make substitutes to the building design, specifications and floorplans should they be necessary. Renderings, views, and layouts are for illustration purposes only. Sales powered by MLA Canada Realty. E.&O.E.



LEVEL 3 & 4



LEVEL 5

### 3 BEDROOM, 2 BATHROOM

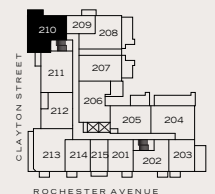
INTERIOR: 846 SF

EXTERIOR: 61 SF

TOTAL: 907 SF



The developer reserves the right to modify or make substitutes to the building design, specifications and floorplans should they be necessary. Renderings, views, and layouts are for illustration purposes only. Sales powered by MLA Canada Realty. E.&O.E.



LEVEL 2

# H1

# LODANA

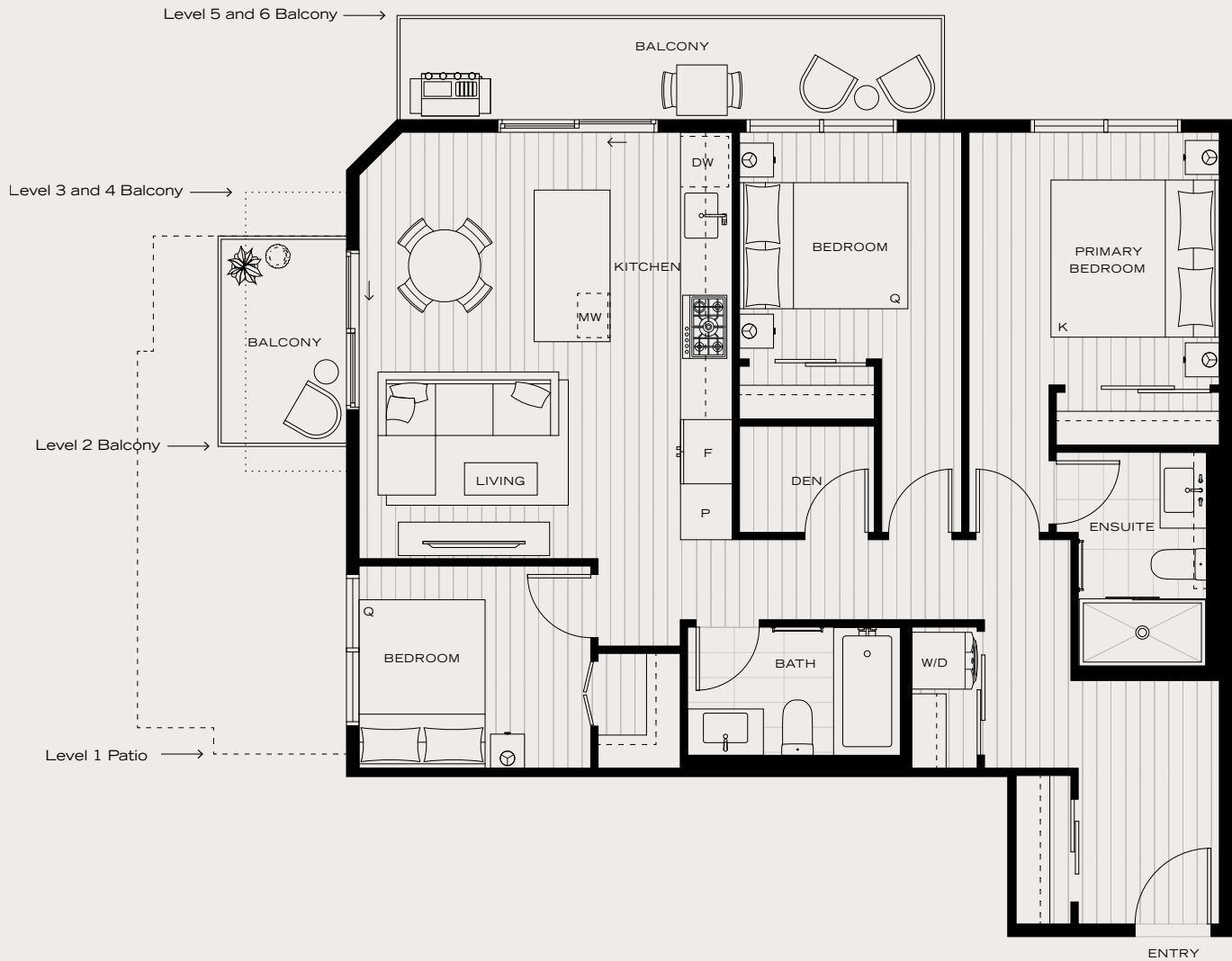
*A return to family* IN WEST COQUITLAM

### 3 BEDROOM + DEN, 2 BATHROOM

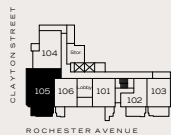
INTERIOR: 961 SF

EXTERIOR: 41-174 SF

TOTAL: 1,002-1,135 SF



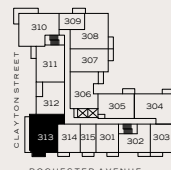
The developer reserves the right to modify or make substitutes to the building design, specifications and floorplans should they be necessary. Renderings, views, and layouts are for illustration purposes only. Sales powered by MLA Canada Realty. E.&O.E.



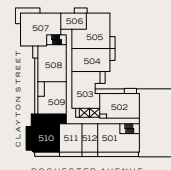
LEVEL 1



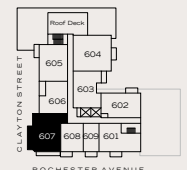
LEVEL 2



LEVEL 3 & 4



LEVEL 5



LEVEL 6

# H2

# LODANA

*A return to family* IN WEST COQUITLAM

### 3 BEDROOM + DEN, 2 BATHROOM

INTERIOR: 956 SF

EXTERIOR: 53 SF

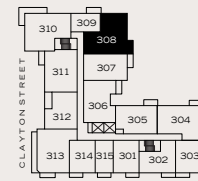
TOTAL: 1,009 SF



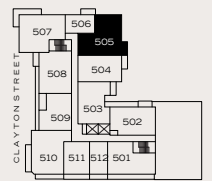
ENTRY



The developer reserves the right to modify or make substitutes to the building design, specifications and floorplans should they be necessary. Renderings, views, and layouts are for illustration purposes only. Sales powered by MLA Canada Realty. E.&O.E.



LEVEL 3 & 4



LEVEL 5

# H3

# LODANA

*A return to family* IN WEST COQUITLAM

## 3 BEDROOM + DEN, 2 BATHROOM

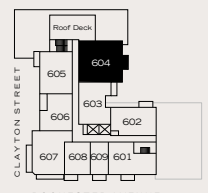
INTERIOR: 1,152 SF

EXTERIOR: 53 SF

TOTAL: 1,205 SF



The developer reserves the right to modify or make substitutes to the building design, specifications and floorplans should they be necessary. Renderings, views, and layouts are for illustration purposes only. Sales powered by MLA Canada Realty. E.&O.E.



LEVEL 6

## 1 BEDROOM, 1 BATHROOM

INTERIOR: 568 SF

EXTERIOR: 81-108 SF

TOTAL: 646-676 SF



The developer reserves the right to modify or make substitutes to the building design, specifications and floorplans should they be necessary. Renderings, views, and layouts are for illustration purposes only. Sales powered by MLA Canada Realty. E.&O.E.



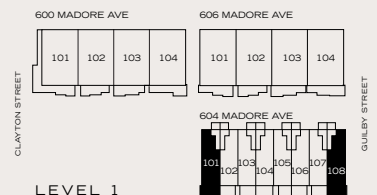
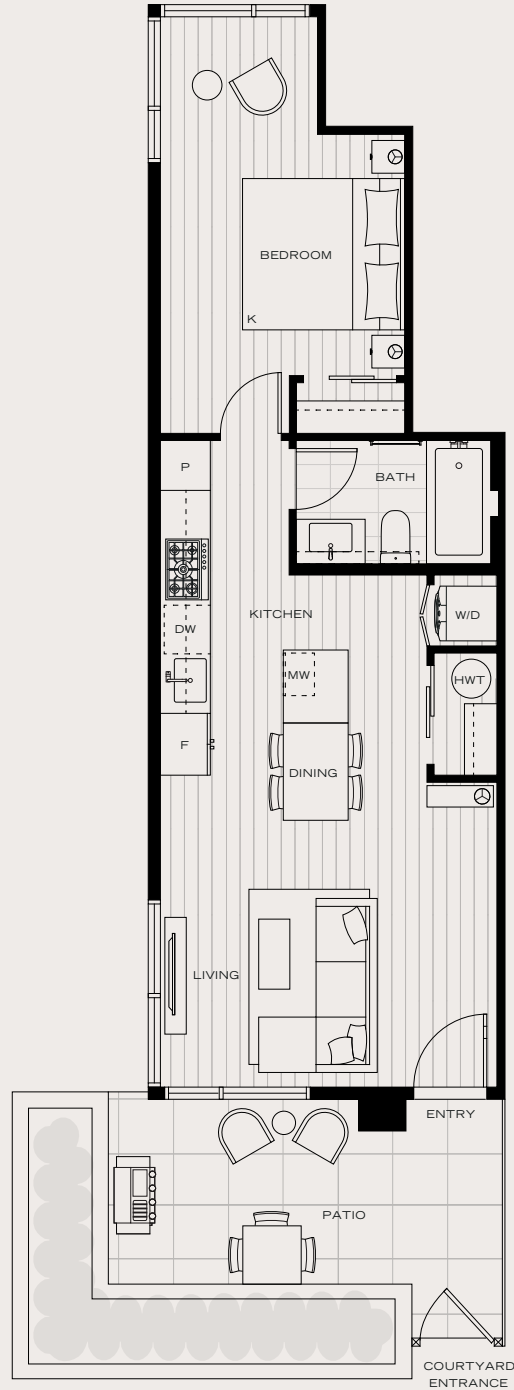
# GH A1A

# LODANA

*A return to family* IN WEST COQUITLAM

1 BEDROOM, 1 BATHROOM

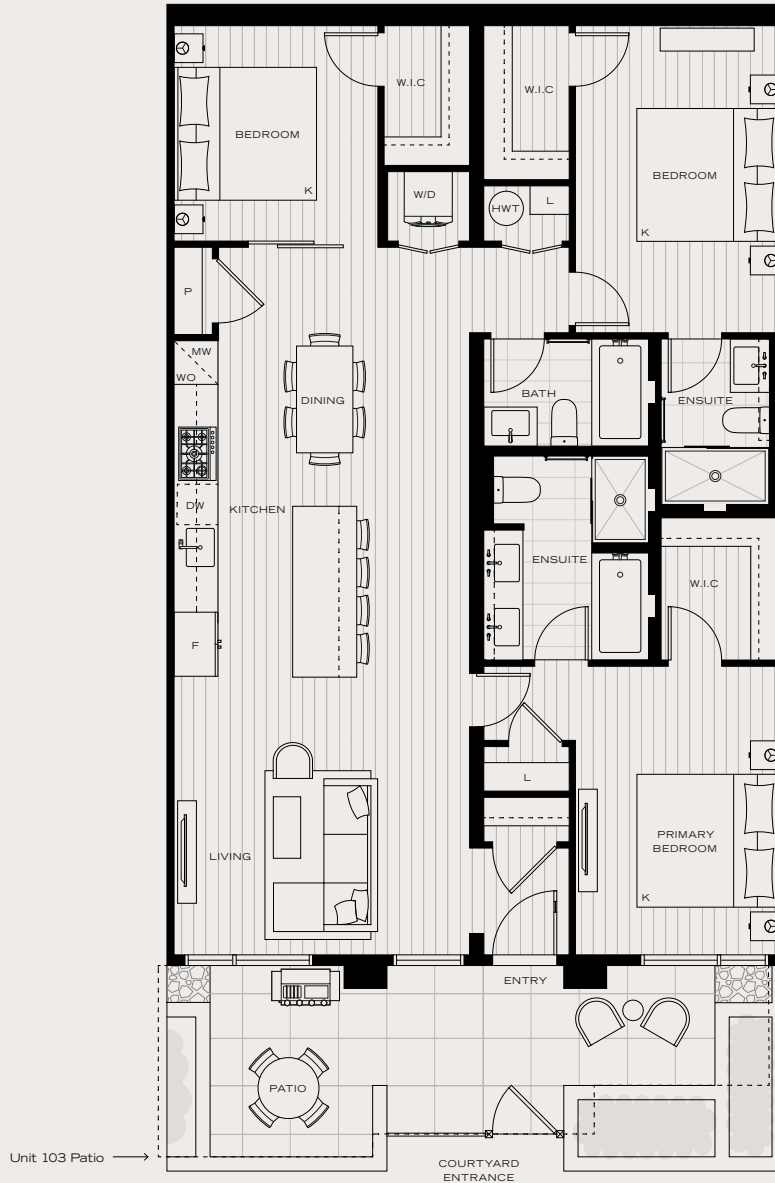
INTERIOR: 576 SF  
EXTERIOR: 130 SF  
TOTAL: 706 SF



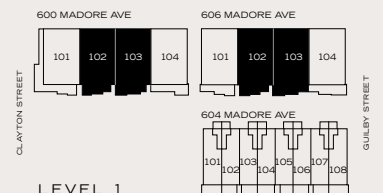
The developer reserves the right to modify or make substitutes to the building design, specifications and floorplans should they be necessary. Renderings, views, and layouts are for illustration purposes only. Sales powered by MLA Canada Realty. E.&O.E.

## JR 3 BEDROOM, 3 BATHROOM

INTERIOR: 1,305 SF  
 EXTERIOR: 160-196 SF  
 TOTAL: 1,465-1,500 SF



The developer reserves the right to modify or make substitutes to the building design, specifications and floorplans should they be necessary. Renderings, views, and layouts are for illustration purposes only. Sales powered by MLA Canada Realty. E.&O.E.



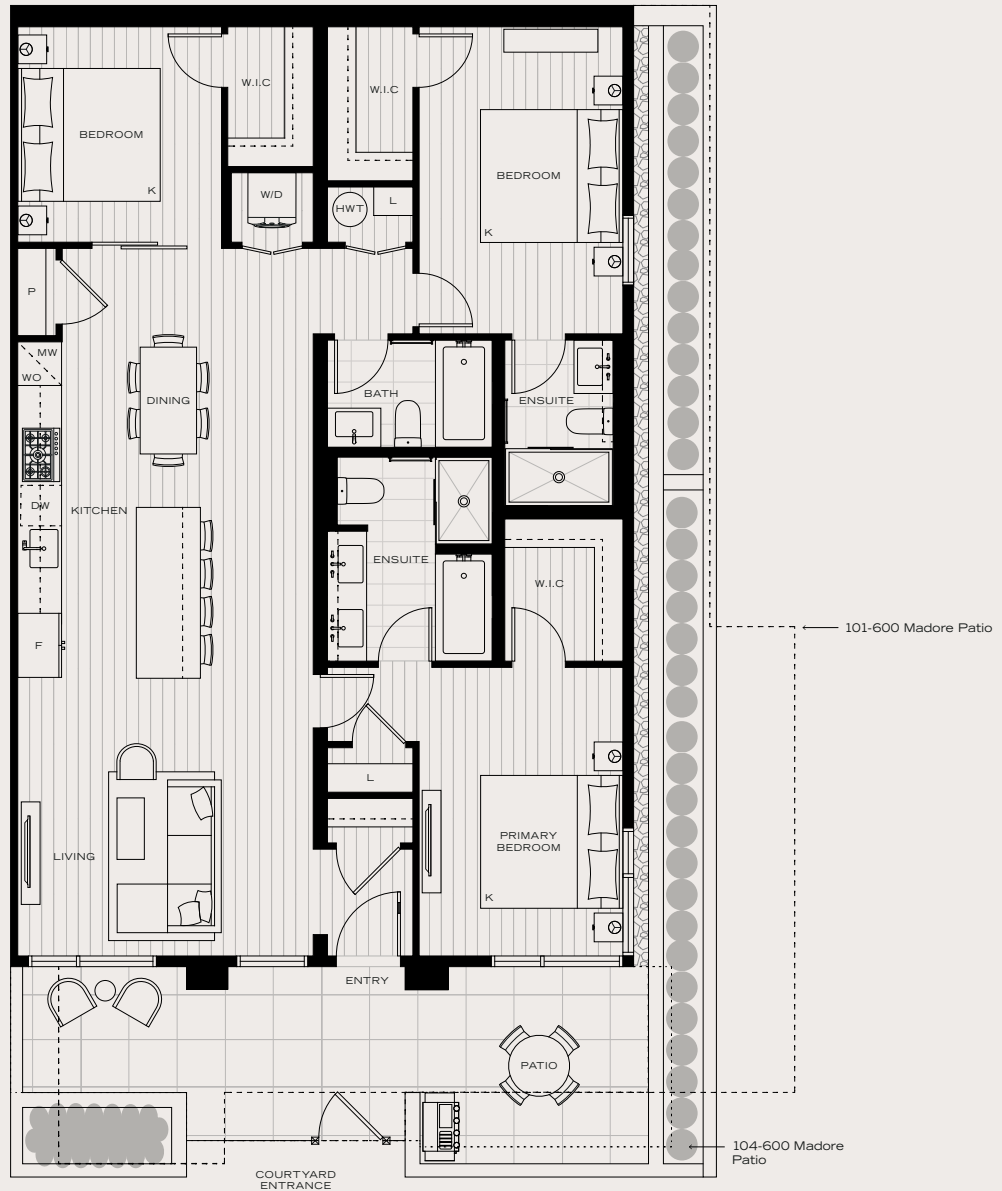


## JR 3 BEDROOM, 3 BATHROOM

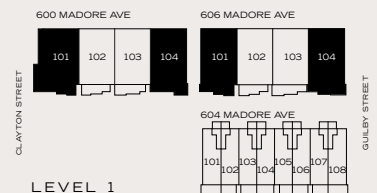
INTERIOR: 1,312 SF

EXTERIOR: 186-435 SF

TOTAL: 1,498-1,747 SF



The developer reserves the right to modify or make substitutes to the building design, specifications and floorplans should they be necessary. Renderings, views, and layouts are for illustration purposes only. Sales powered by MLA Canada Realty. E.&O.E.

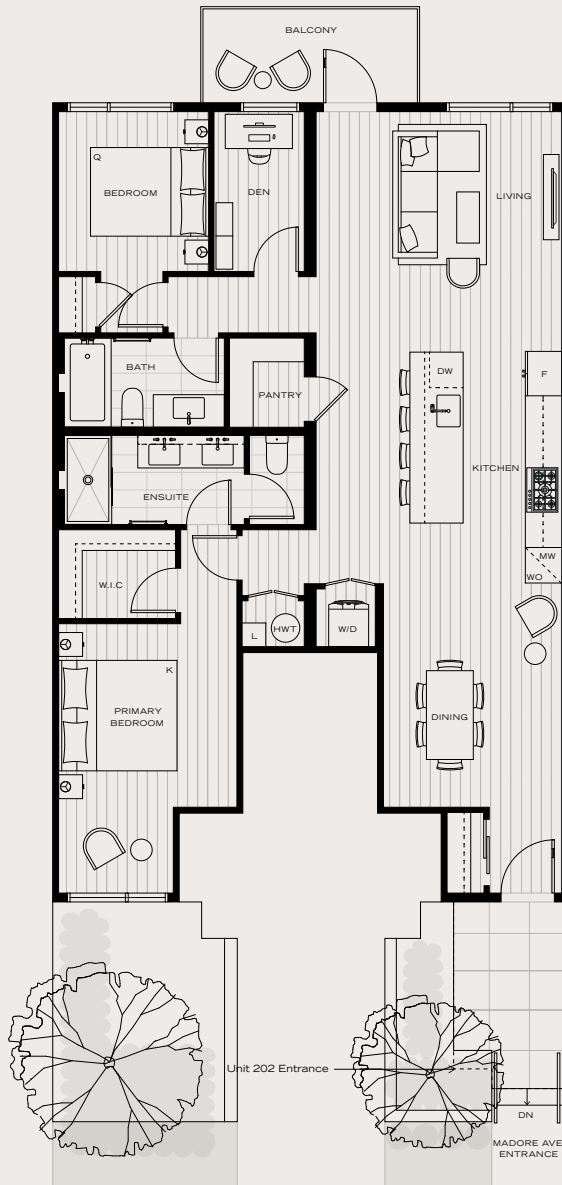


## 2 BEDROOM + DEN, 2 BATHROOM

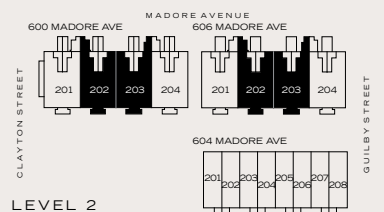
INTERIOR: 1,164 SF

EXTERIOR: 115-128 SF

TOTAL: 1,279-1,292 SF



The developer reserves the right to modify or make substitutes to the building design, specifications and floorplans should they be necessary. Renderings, views, and layouts are for illustration purposes only. Sales powered by MLA Canada Realty. E.&O.E.



LEVEL 2

# GH A3A

# LODANA

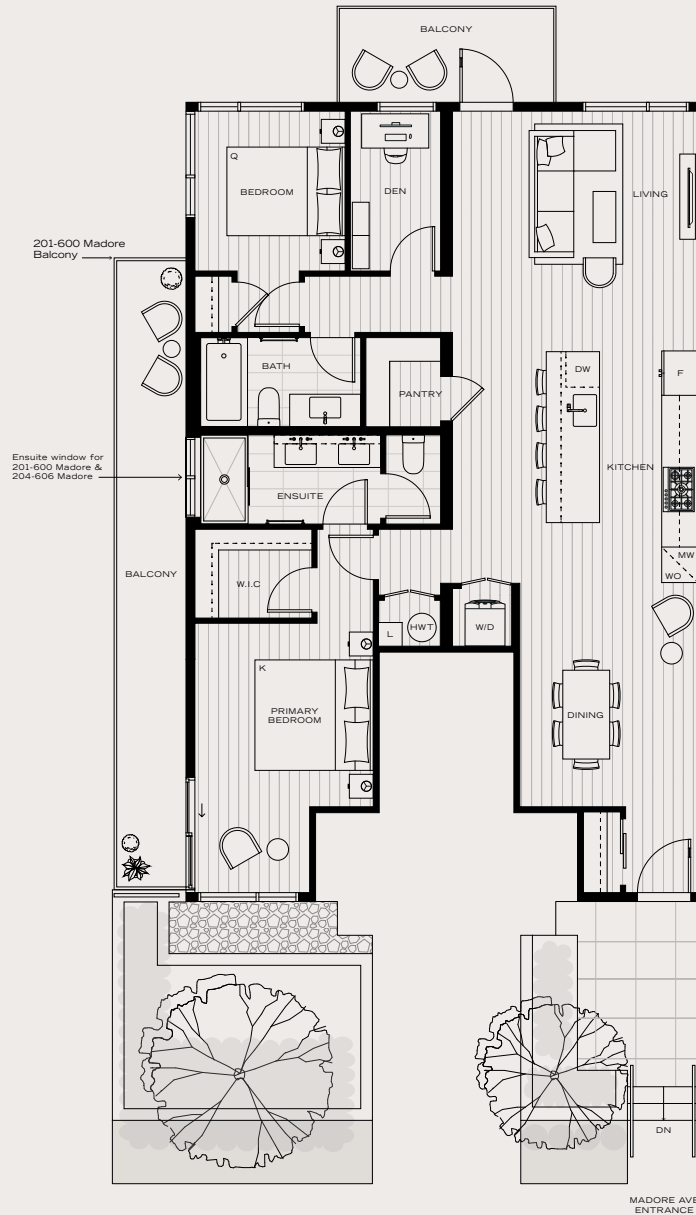
*A return to family* IN WEST COQUITLAM

**2 BEDROOM + DEN, 2 BATHROOM**

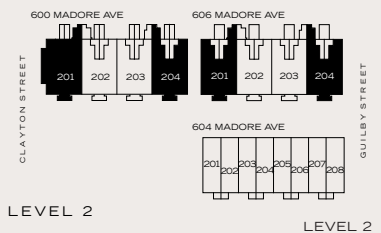
INTERIOR: 1,171 SF

EXTERIOR: 100-157 SF

TOTAL: 1,271-1,328 SF



The developer reserves the right to modify or make substitutes to the building design, specifications and floorplans should they be necessary. Renderings, views, and layouts are for illustration purposes only. Sales powered by MLA Canada Realty. E.&O.E.

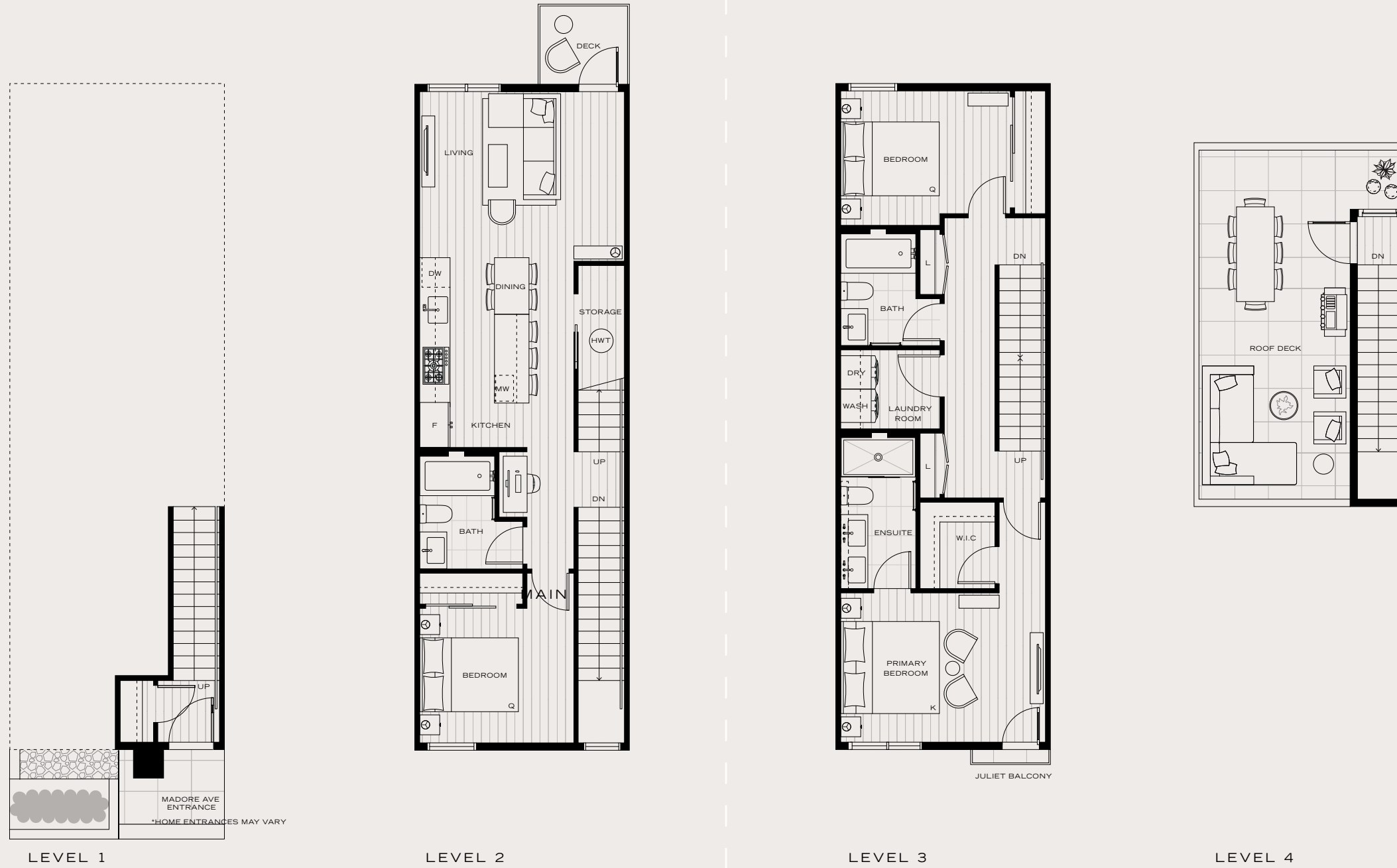


LEVEL 2

LEVEL 2

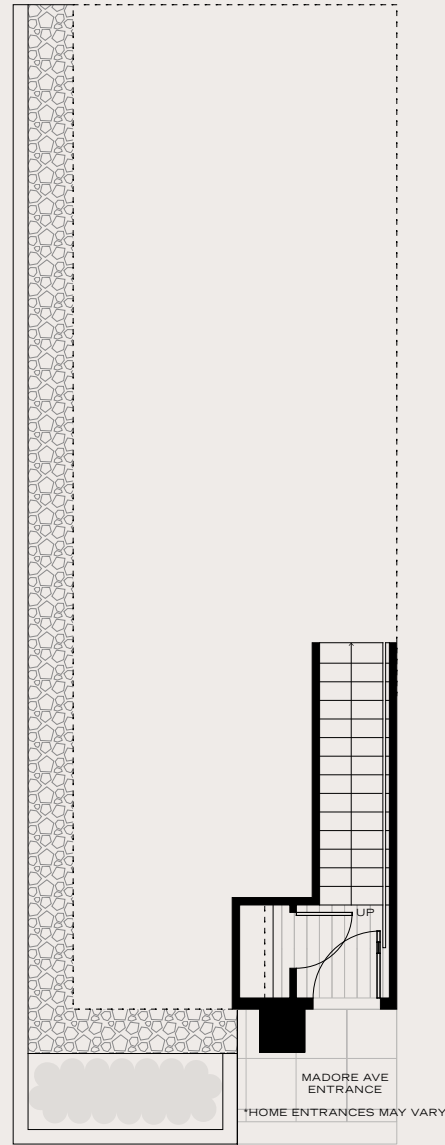
**3 BEDROOM + ROOF DECK, 3 BATHROOM**

INTERIOR: 1,400 SF  
 EXTERIOR: 305-338 SF  
 TOTAL: 1,705-1,738 SF

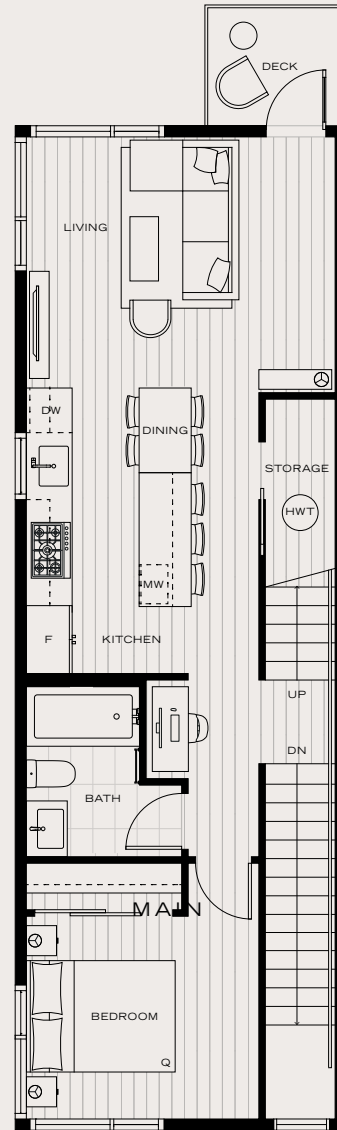


**3 BEDROOM + ROOF DECK, 3 BATHROOM**

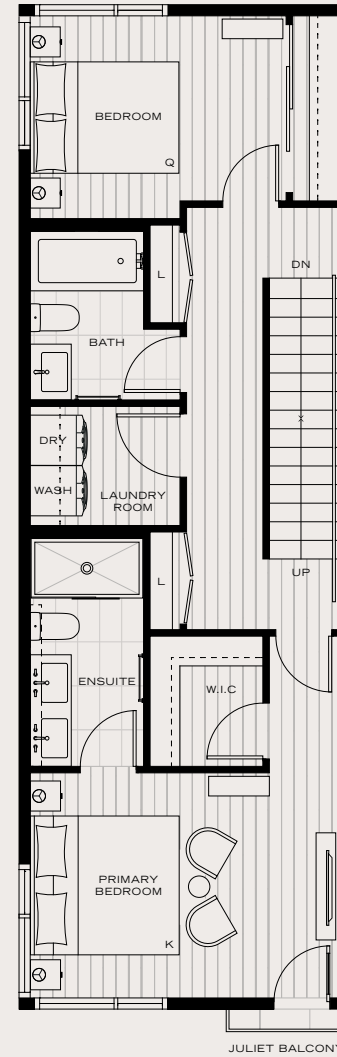
INTERIOR: 1,415 SF  
 EXTERIOR: 309-364 SF  
 TOTAL: 1,723-1,779 SF



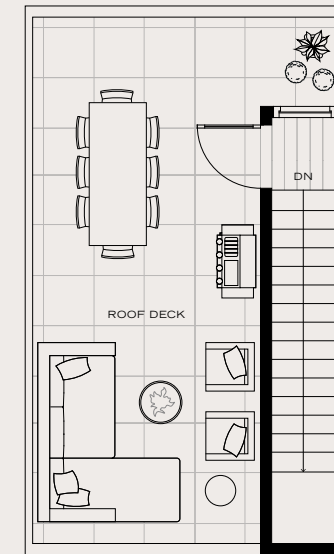
LEVEL 1



LEVEL 2



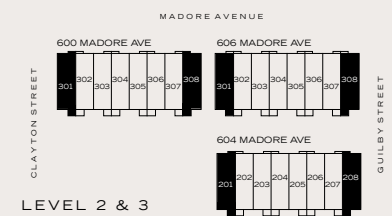
LEVEL 3



LEVEL 4

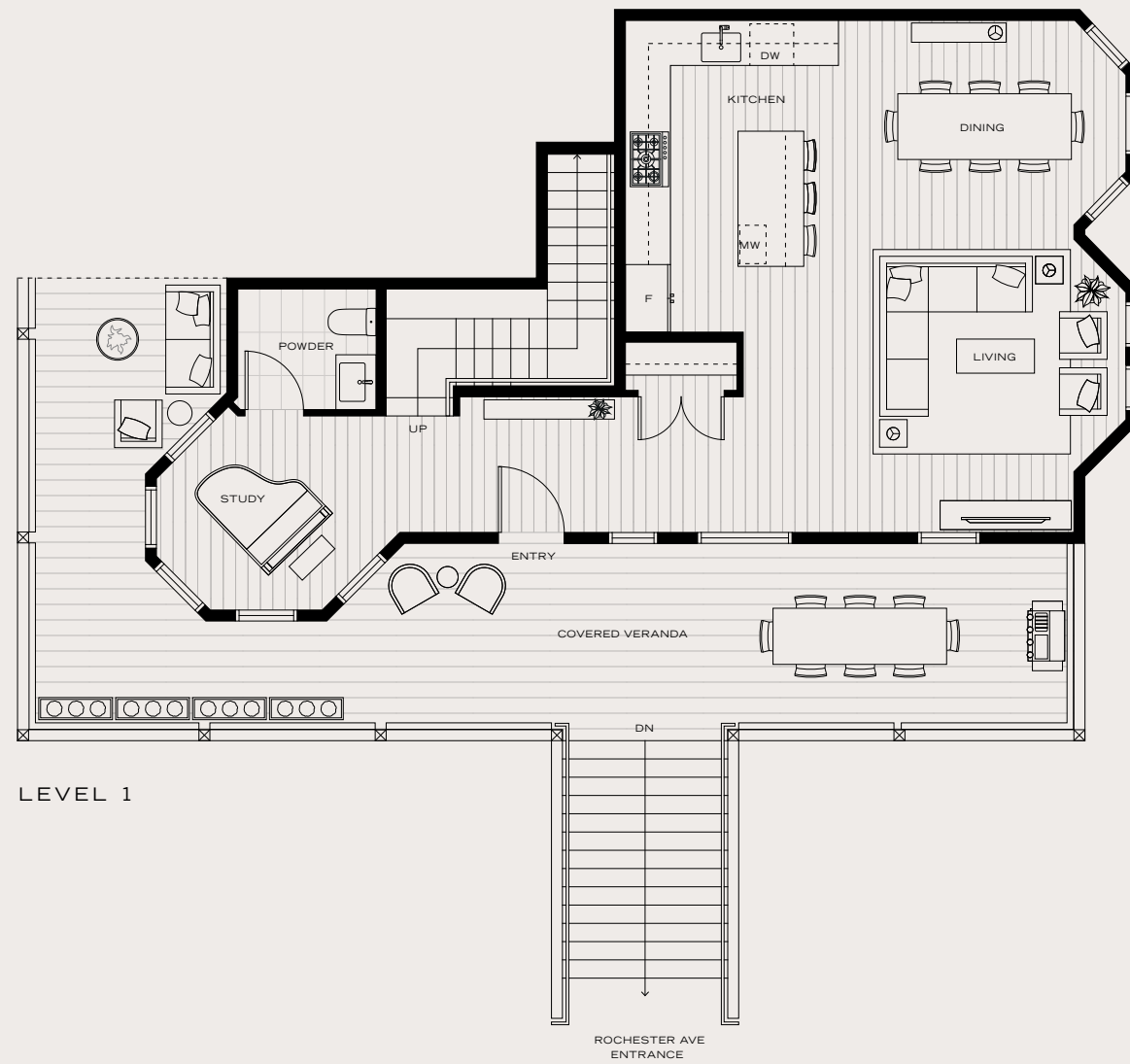


The developer reserves the right to modify or make substitutes to the building design, specifications and floorplans should they be necessary. Renderings, views, and layouts are for illustration purposes only. Sales powered by MLA Canada Realty. E.&O.E.



**4 BEDROOM + STUDY, 3.5 BATHROOM**

INTERIOR: 1,892 SF  
 EXTERIOR: 462 SF  
 TOTAL: 2,354 SF

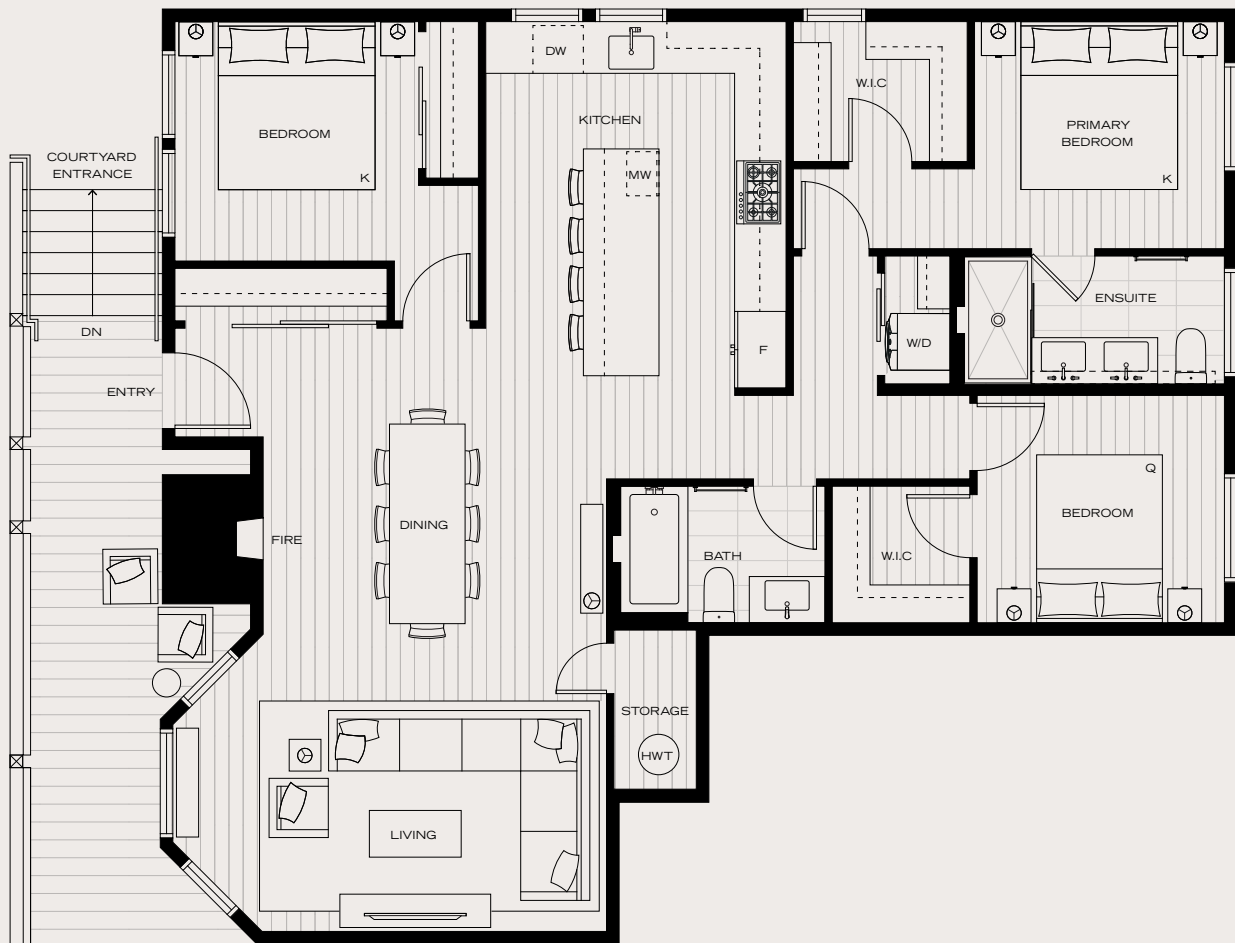


## 3 BEDROOM, 2 BATHROOM

INTERIOR: 1,255 SF

EXTERIOR: 155 SF

TOTAL: 1,410 SF

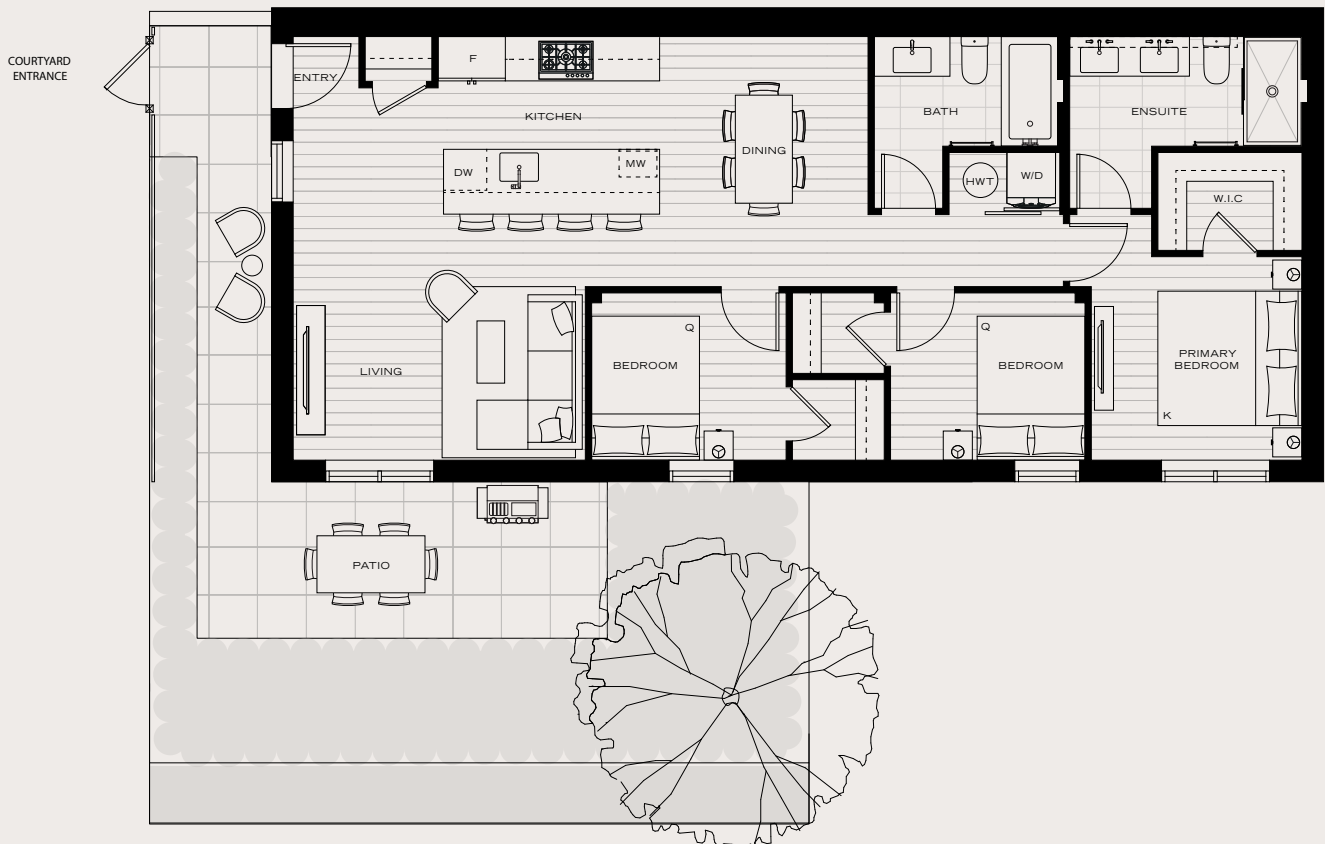


## 3 BEDROOM, 2 BATHROOM

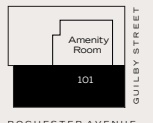
INTERIOR: 1,052 SF

EXTERIOR: 199 SF

TOTAL: 1,251 SF



The developer reserves the right to modify or make substitutes to the building design, specifications and floorplans should they be necessary. Renderings, views, and layouts are for illustration purposes only. Sales powered by MLA Canada Realty. E.&O.E.



LEVEL 1