

# H1

# LODANA

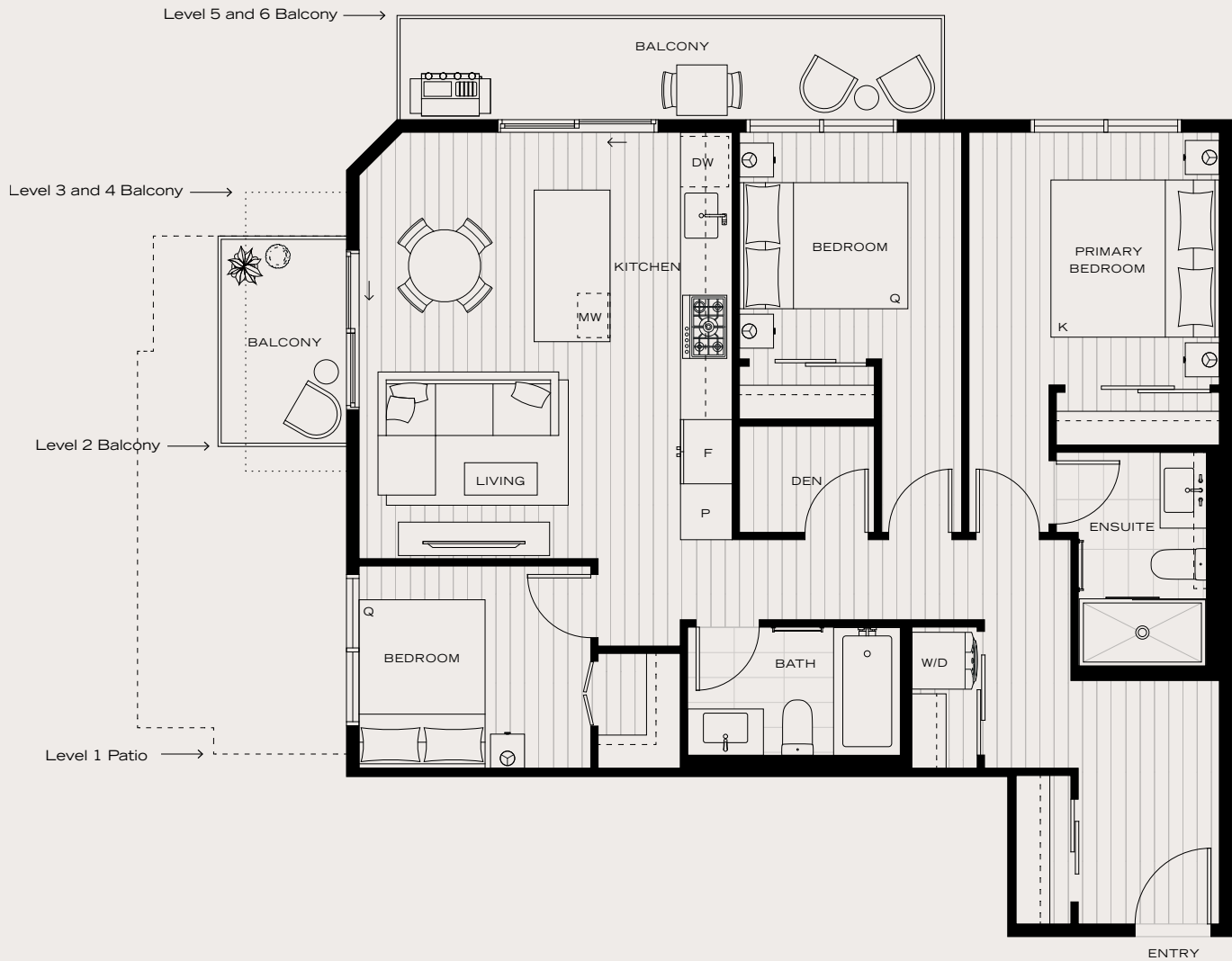
*A return to family* IN WEST COQUITLAM

### 3 BEDROOM + DEN, 2 BATHROOM

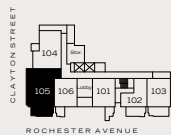
INTERIOR: 961 SF

EXTERIOR: 41-174 SF

TOTAL: 1,002-1,135 SF



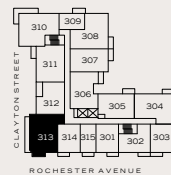
The developer reserves the right to modify or make substitutes to the building design, specifications and floorplans should they be necessary. Renderings, views, and layouts are for illustration purposes only. Sales powered by MLA Canada Realty. E.&O.E.



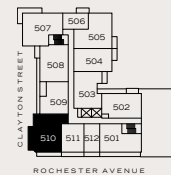
LEVEL 1



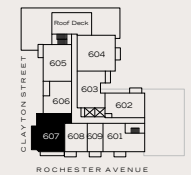
LEVEL 2



LEVEL 3 & 4



LEVEL 5



LEVEL 6